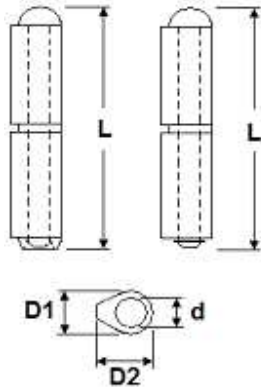




Hinges  
Hardware  
& Mixers



## Code no. 11 WELD-ON BARREL HINGES

■ With round head, loose pin

### Options

- Hinge Material                    steel, stainless steel Grade 304 (ST/ST), stainless steel 316, Aluminium
- Pin & Washer Material        steel, brass, stainless steel
- Grease Nipple                    with or without
- Cir clip

Code	Length = L	Cross Section = D1 / D2	Pin dia = d	Hinge Material	Pin Material	Washer Material	Grease Nipple	Weight (kg)
11-060	60	10/12	6	Steel	Steel	Brass	No	0.036
11-060BP	60	10/12	6	Steel	Brass	Brass	No	0.036
11-060STST	60	10/12	6	ST/ST	ST/ST	ST/ST	No	0.036
11-060A	60	10/12	6	Aluminium	ST/ST	ST/ST	No	0.036
11-080	80	13/16	8	Steel	Steel	Brass	No	0.083
11-080BP	80	13/16	8	Steel	Brass	Brass	No	0.083
11-080STST	80	13/16	8	ST/ST	ST/ST	ST/ST	No	0.083
11-080A	80	13/16	8	Aluminium	ST/ST	ST/ST	No	0.083
11-100	100	16/20	10	Steel	Steel	Brass	No	0.168
11-100BP	100	16/20	10	Steel	Brass	Brass	No	0.168
11-100STST	100	16/20	10	ST/ST	ST/ST	ST/ST	No	0.168
11-100A	100	16/20	10	Aluminium	ST/ST	ST/ST	No	0.168
11-120	120	16/20	10	Steel	Steel	Brass	No	0.20
11-120BP	120	16/20	10	Steel	Brass	Brass	No	0.20
11-120STST	120	16/20	10	ST/ST	ST/ST	ST/ST	No	0.20
11-120A	120	16/20	10	Aluminium	ST/ST	ST/ST	No	0.20
11-135	135	18/22	12	Steel	Steel	Brass	No	0.29
11-135BP	135	18/22	12	Steel	Brass	Brass	No	0.29
11-150	150	20/25	13	Steel	Steel	Brass	No	0.39
11-150BP	150	20/25	13	Steel	Brass	Brass	No	0.39
11-150STST	150	20/25	13	ST/ST	ST/ST	ST/ST	No	0.39
11-180	180	20/25	13	Steel	Steel	Brass	No	0.48
11-180BP	180	20/25	13	Steel	Brass	Brass	No	0.48
11-180STST	180	20/25	13	ST/ST	ST/ST	ST/ST	No	0.48
11-200	200	23/29	16	Steel	Steel	Brass	No	0.71
11-200BP	200	23/29	16	Steel	Brass	Brass	No	0.71

Dimensions in mm