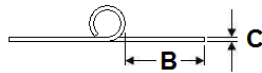
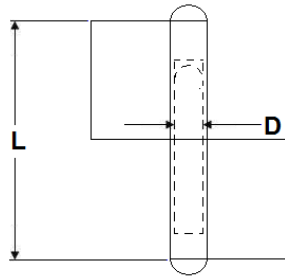




Hinges
Hardware
& Mixers



LEFT HAND HINGE

RIGHT HAND HINGE

Code no. 17-000
ROLLED FLAG HINGES

- With round head, fixed pin
- 2 part rolled steel hinges with end caps
- Self colour, no holes
- Left hand (L/H) or right hand (R/H)

Options

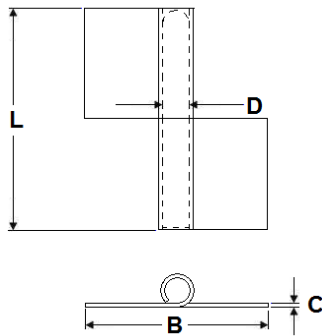
- Hinge Material steel, stainless steel (ST/ST)
 Grade 304, stainless steel 316
- Pin & Washer Material steel, brass, stainless steel

Code	Length = L	Width = B	Thickness = C	Pin dia = D	Hinge Material	Pin Material	Washer Material	Head Type	Weight (kg)
17-000A	80	30	3	10	Steel	Steel	Brass	Round	0.18
17-000ASP	80	30	3	10	Steel	ST/ST	Brass	Round	0.18
17-000AST	80	30	3	10	ST/ST grade 304	ST/ST	ST/ST	Flat	0.18
17-000AB	80	30	3	10	Steel	Brass	Brass	Round	0.18
17-000B	100	30	3	10	Steel	Steel	Brass	Round	0.23
17-000BSP	100	30	3	10	Steel	ST/ST	Brass	Round	0.23
17-000BST	100	30	3	10	ST/ST grade 304	ST/ST	ST/ST	Flat	0.23
17-000BST316	100	50	3	10	ST/ST grade 316	ST/ST	ST/ST	Flat	0.23
17-000BB	100	30	3	10	Steel	Brass	Brass	Round	0.23

Dimensions in mm



LEFT HAND HINGE



RIGHT HAND HINGE

Code no. 17-000 ROLLED FLAG HINGES

- With fixed pin
- 2 part rolled steel hinges without end caps
- Self colour, no holes
- Left hand (L/H) or right hand (R/H)

Options

- Hinge Material steel
- Pin & Washer Material brass, steel

Code	Length = L	Width = B	Thickness = C	Pin dia = D	Hinge Material	Pin Material	Washer Material	Head Type	Weight (kg)
17-000C	51	38	1.2	3.2	Steel	Steel	Brass	-	0.10
17-000D	63.5	41	1.6	4.7	Steel	Steel	Brass	-	0.12
17-000E	76	51	2	6.3	Steel	Steel	Brass	-	0.18
17-000F	76	90	3	8	Steel	Steel	Brass	-	0.18
17-000G	102	76	3	9.5	Steel	Steel	Brass	-	0.23
17-000H	102	76	4.5	12.7	Steel	Steel	Brass	-	0.23

Dimensions in mm