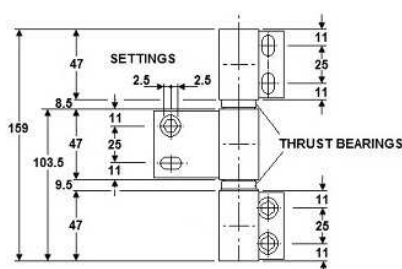


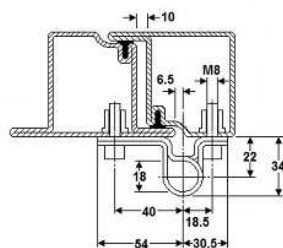
Code no. 17-07 SPECIAL HINGES

- With thrust bearings
- For heavy doors and fire doors



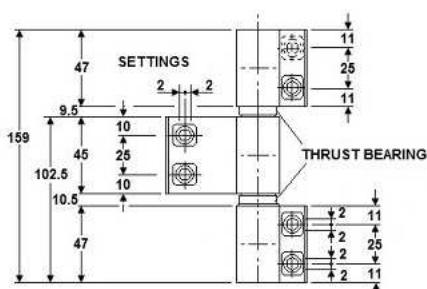
Code No.17-072A

3-part hinge, L 160 mm, steel
The maximum door weight: 160kg
Net Weight: 1030g / unit



Code No.17-072B

3-part hinge with self-closing spring
L 160 mm, steel
Maximum door weight 160kg
Net Weight: 1050g / unit

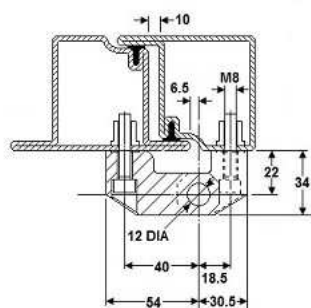


Code No.17-074A

2-part hinge, L 160 mm, steel, max. door weight 80kg. N.Weight: 850g / unit

Code No.17-074E

3-part hinge, L 160 mm, steel, max. door weight 150kg
Net Weight: 1050g / unit



Code No.17-074F

3-part hinge with self-closing spring, steel
Net Weight: 1000g / unit

Code No.17-074G

2-part hinge, stainless steel
Net Weight: 850g / unit

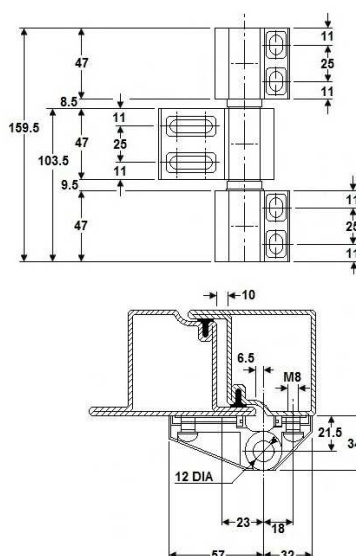
Code No.17-074H

3-part hinge, stainless steel
Net Weight: 850g / unit

Dimensions in mm

Code no. 17-07 SPECIAL HINGES

- With thrust bearings
- For heavy doors and fire doors



Code No.17-076J

2-part hinge, L 160 mm, steel, max. door weight 80kg
Net Weight: 850g / unit

Code No.17-076L

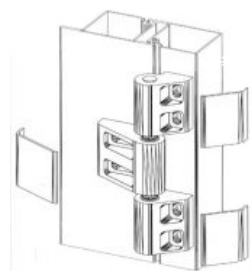
3-part hinge, L 160 mm, steel, max. door weight 150kg
Net Weight: 1050g / unit

Code No.17-076N

3-part hinge with self-closing spring, steel.
Net Weight: 1050g / unit

Code No.17-076Q

3-part hinge, stainless steel
Net Weight: 1050g / unit



Dimensions in mm