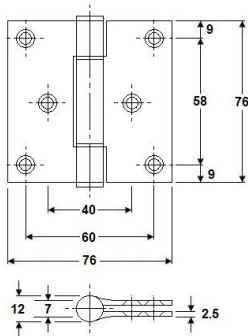


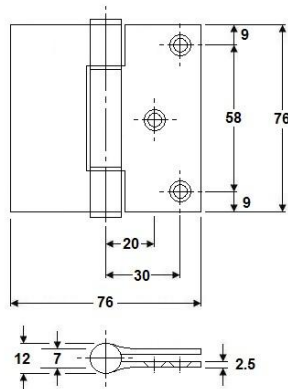
Code no. 61
STAINLESS STEEL 316 HINGES



Code no. 61-003

Matt finished stainless steel 316 (1.4401) with flat end caps.
Stainless steel pin diameter 7 mm. With stainless steel washers and 6 countersunk holes for M5 screws.

L 76 x 76 x 2.5 mm, pin dia = 7 mm
Screw Ø 5 mm



Matt finished stainless steel 316 (1.4401) with flat end caps.
Stainless steel pin diameter 7 mm. With stainless steel washers and 3 countersunk holes for M5 screws. One leaf without holes

Code no. 61-005R

L 76 x 76 x 2.5 mm, pin dia = 7 mm, Right hand
Screw Ø 5 mm

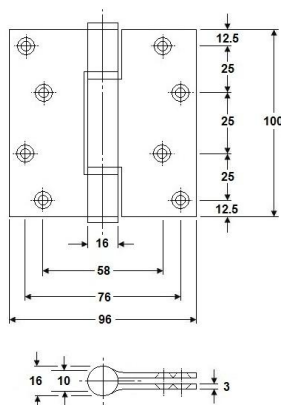
Code no. 61-005L

L 76 x 76 x 2.5 mm, pin dia = 7 mm, Left hand
Screw Ø 5 mm

Code no. 61-005N

L 76 x 76 x 2.5 mm, without holes

R/H



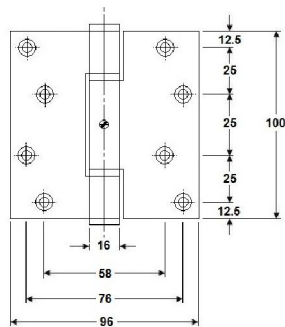
Code no. 61-006

Matt finished stainless steel 316 (1.4401) with flat end caps.
Stainless steel pin diameter 10 mm. With stainless steel washers and 8 countersunk holes for M5 screws

L 100 x 96 x 3 mm, pin dia = 10 mm
Screw Ø 5 mm

Dimensions in mm

Code no. 61
STAINLESS STEEL 316 HINGES



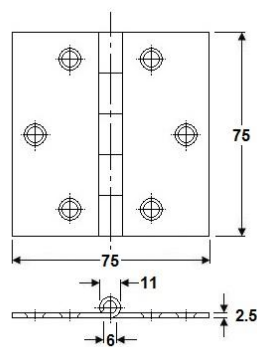
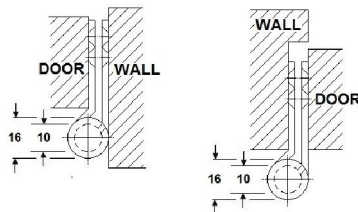
Matt finished stainless steel 316 (1.4401) with flat end caps. Stainless steel pin diameter 10 mm. With stainless steel washers and 8 countersunk holes for M5 screws. Suitable for recessed and flush surface situation. Suitable for extra large openings; for example, wheelchair access.

Code no. 61-012R

L 100 x 96 x 3 mm, pin dia = 10 mm, Right hand
Screw Ø 5 mm

Code no. 61-012L

L 100 x 96 x 3 mm, pin dia = 10 mm, Left hand
Screw Ø 5 mm



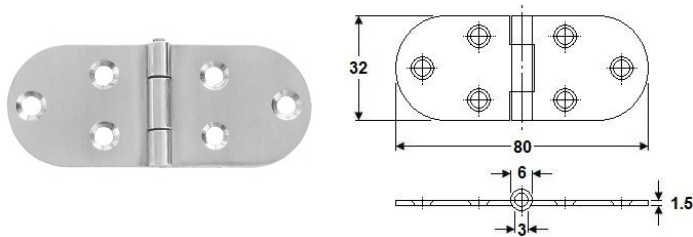
Identical with holes. Matt finished stainless steel 316 (1.4401) with flat end caps, with fixed stainless steel pin diameter 6 mm. Flat back hinge with 6 countersunk holes for M5 screws.

Code no. 61-014

L 75 x 75 x 2.5 mm, pin dia = 6 mm
Screw Ø 5 mm

Dimensions in mm

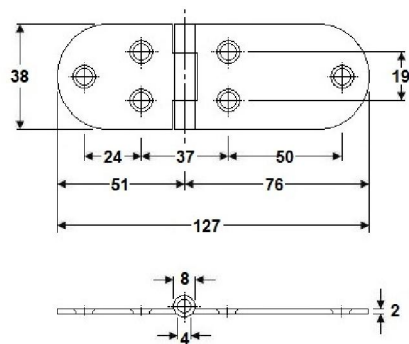
Code no. 61
STAINLESS STEEL 316 HINGES



Code no. 61-016

Matt finished stainless steel 316 (1.4401) body with stainless steel pin diameter 3 mm. 3 knuckles. Center swaged with 6 countersunk holes for M4 screws.

L 32 x 80 x 1.5 mm, pin dia = 3 mm
Screw Ø 3.5 mm



Code no. 61-018

Matt finished stainless steel 316 (1.4401) body with stainless steel pin diameter 4 mm. 3 knuckles. Unequal leaves width 51 + 76 mm with 6 countersunk holes for M4 screws.

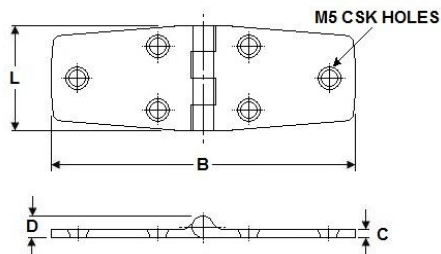
L 38 x 127 x 2 mm, pin dia = 4 mm
Screw Ø 3.5 mm



Stainless steel 316 (1.4401) body with fixed stainless steel pin. 6 knuckles. Flat back hinge with 6 countersunk holes for M5 screws.

Code no. 61-021C

L 38 x 104 x 4 mm, pin dia = 1.5 mm, D=9.5
Screw Ø 5 mm



Code no. 61-021D

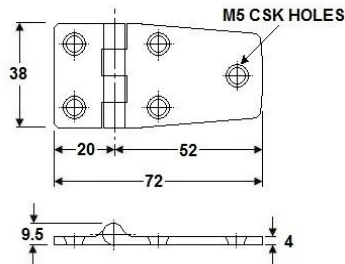
L 27 x 160 x 4 mm, pin dia = 2 mm, D=10
Screw Ø 5 mm

Dimensions in mm



Hinges
Hardware
& Mixers

Code no. 61 STAINLESS STEEL 316 HINGES



Code no. 61-022

Mirror polished stainless steel 316 (1.4401) body with fixed stainless steel pin. 4 knuckles. Flat back. Unequal leaves width 22 + 52 mm with 5 countersunk holes for M5 screws.

L 38 x 74 x 4 mm.

Screw Ø 5 mm

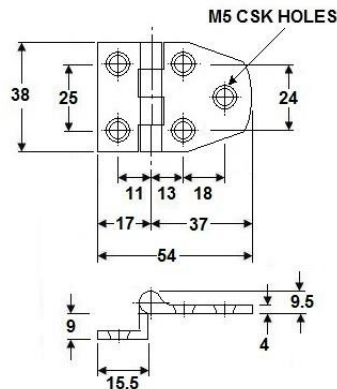


Code no. 61-023

Mirror polished stainless steel 316 (1.4401) body with fixed stainless steel pin. 4 knuckles. Flat back. Unequal leaves width 20 + 38 mm with 5 countersunk holes for M5 screws.

L 39 x 58 x 4 mm.

Screw Ø 5 mm

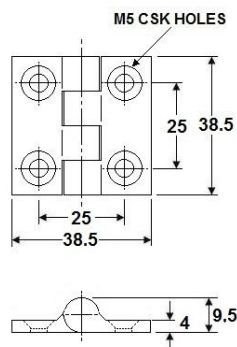


Code no. 61-025

Mirror polish stainless steel 316 (1.4401) body with fixed stainless steel pin. 4 knuckles hinge with unequal leaves width 17 + 37 mm with 5 countersunk holes for M5 screws.

L 38 x 54 x 4 mm

Screw Ø 5 mm



Code no. 61-026

Mirror polished stainless steel 316 (1.4401) body with fixed stainless steel pin. 4 knuckles flat back hinge with 4 countersunk holes for M5 screws.

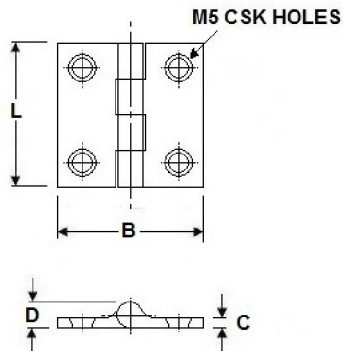
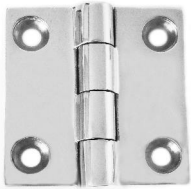
L 38.5 x 38.5 x 4 mm

Screw Ø 5 mm



Hinges
Hardware
& Mixers

Code no. 61 STAINLESS STEEL 316 HINGES



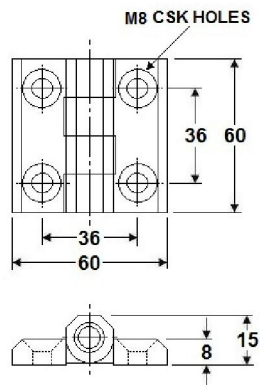
Mirror polished stainless steel 316 (1.4401) body with stainless steel pin. Flat back hinge with 4 knuckles and with 4 countersunk holes for M5 screws.

Code no. 61-027C

L 50 x 50 x 4 mm, D=9.5
Screw Ø 5 mm

Code no. 61-027D

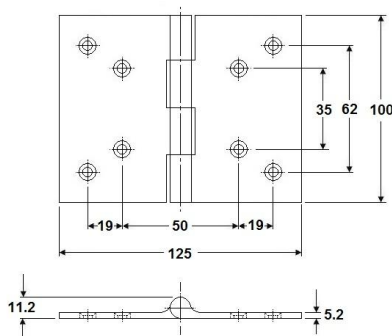
L 100 x 100 x 5.2 mm, D=11.2
Screw Ø 5 mm



Code no. 61-030

Stainless steel 316 (1.4401) cast hinges with fixed pin with beveled edge. 4 knuckles with 4 countersunk holes for M8 screws.

L 60 x 60 x 8 mm
Screw Ø 8.4 mm



Code no. 61-032

Stainless steel 316 (1.4401) cast hinges with fixed stainless steel fixed pin dia. 5 mm. Mirror polished finish. 4 knuckles flat back hinge with 8 countersunk holes for M5 screws.

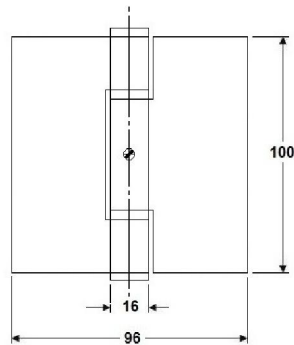
L 100 x 125 x 5.2 mm, pin dia= 5 mm
Screw Ø 5 mm

Dimensions in mm



Hinges
Hardware
& Mixers

Code no. 61 STAINLESS STEEL 316 HINGES



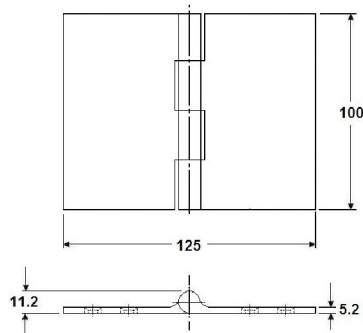
Stainless steel 316 (1.4401) body with flat end caps and removable stainless steel 316 pin and 2 washers. One leaf flat back and one leaf swaged, without holes.

Code no. 61-035R

L 100 x 96 x 3 mm, pin dia = 10 mm, Right hand

Code no. 61-035L

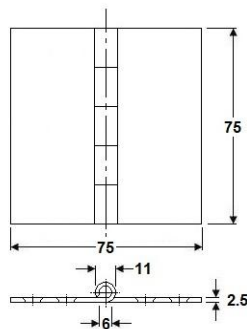
L 100 x 96 x 3 mm, pin dia = 10 mm, Left hand



Code no. 61-036

Stainless steel 316 (1.4401) cast hinge with fixed stainless steel pin dia. 5 mm. Mirror polished finish. Without holes. Flat back.

L 100 x 125 x 5.2 mm, pin dia = 5 mm



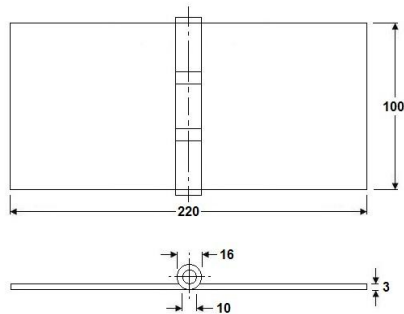
Code no. 61-039

Stainless steel 316 (1.4401) cast hinge with fixed stainless steel pin dia. 6 mm. Mirror polished finish. Without holes. Flat back.

L 75 x 75 x 2.5 mm, pin dia = 6 mm

Dimensions in mm

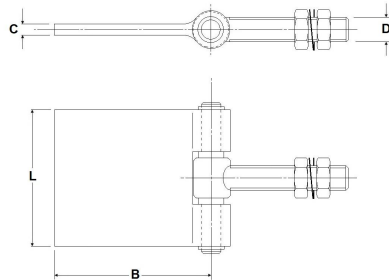
Code no. 61
STAINLESS STEEL 316 HINGES



Code no. 61-042

Stainless steel 316 (1.4401) hinge with loose stainless steel pin dia. 10 mm. Mirror polished finish. Without holes. Flat back. With 2 strong stainless steel 304 bearings.

L 100 x 220 x 3 mm, pin dia = 10 mm



Stainless steel 316 (1.4401) cast hinge with fixed pin with beveled edge. 4 knuckles with 4 countersunk holes for M8 screws.

Code no. 61-043A

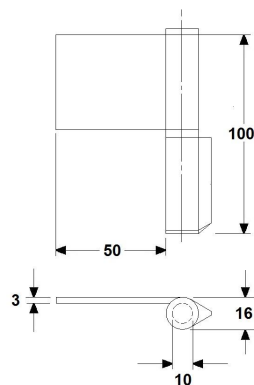
L 50 x B 97 x C 10 mm, bolt: M12 x 100

Code no. 61-043B

L 70 x B 122 x C 10 mm, bolt: M16 x 80

Code no. 61-043C

L 70 x B 122 x C 10 mm, bolt: M20 x 130



Stainless steel 316 (1.4401) Lift-off hinge with stainless steel pin dia. 10 mm. Flat head with flat hinge leaf and one s/s washer. Without holes. Hinges are handed.

Code no. 61-045R

L 100 x 50 x 3 mm, pin dia = 10 mm, Right hand

Code no. 61-045L

L 100 x 50 x 3 mm, pin dia = 10 mm, Left hand

Dimensions in mm