

DRUM HOOP MIXERS

DRUM HOOP MIXERS

	Page No.
General Information	1
Models of Drum Hoop Mixers	A1
Three-Blade Mixing Inserts	A2
Special execution	A3
.....	
.....	

- * Dimensions in mm unless otherwise specified
- * Specifications may change without notification

www.calmorehinges.co.uk

RRM

DRUM HOOP MIXERS

RRM series
Drum Hoop Mixers

DRUM HOOP MIXERS
POSITIVE MIXERS
SIEVES AND CLASSIFYING MACHINES

from CALMORE



RRM

DRUM HOOP MIXERS



Additional Equipment

All drum hoop mixers can be equipped with a protective fence according to the EC directives and with a three-blade mixing insert for accelerating and improving the mixing intensity.

Mode of Operation

- The container rotating around an inclined axis serves as a mixing tool.
- The rotating movement and the inclined arrangement of the container walls result in a mixing effect which is based on the combination of gravity and frictional forces. The particles are lifted and slide or fall back into the product to be mixed. This guarantees intensive mixing.

Advantages

- Intensive mixing even in the case of small quantities for example of additives or active substances
- Very suitable for small and frequently changing quantities of product
- Easy exchanging of the mixing container
- Easy cleaning of the mixing container

Features

- Mixing, homogenizing and dyeing
- 5 different sizes
- 50 litre up to 400 litre mixing containers
- Batch operation
- Wide range of additional equipment and special executions
- Optionally available with variable speed
- Optionally available in conformity with ATEX according to directive 94/9 EG
- Optionally available in GMP execution

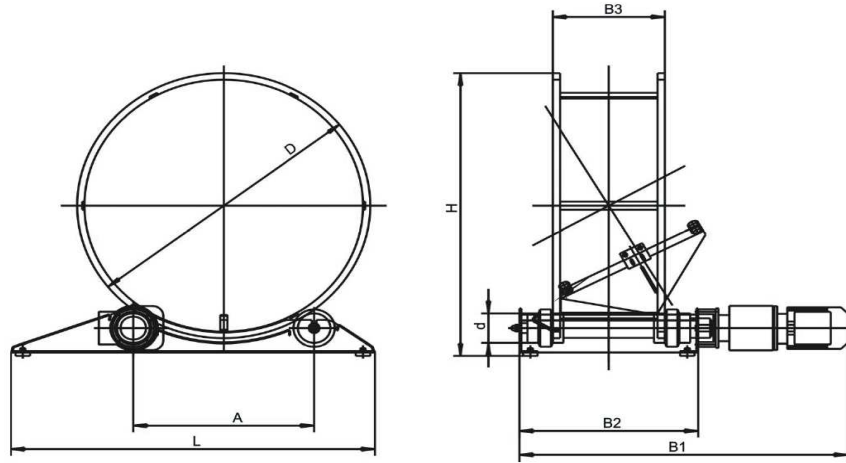
Range of Application

Mixing, homogenizing and dyeing of powdery or granulated components in the plastics, chemical, chemico-technical industry, drug and dye works, food and luxury food industry as well as producers of textiles and leathers. Moreover special purposes such as: dissolving solids in liquids, polishing metal or plastic parts, moving inert

RRM

DRUM HOOP MIXERS

Drum Hoop Mixers



Model	Material	Drum Hoop		Roller Base			Height H	Weight		Rollers d	Axle A
		D	B3	L	B2	B1		Base	Hoop		
RRM ELTE 650	carbon steel	650	250	935	384	384	720	30 kg	9 kg	70	425
RRM ELTE 650	stainless steel	650	250	935	384	384	720	30 kg	9 kg	70	425
RRM 100	carbon steel	800	310	935	494	1020	865	43 kg	12 kg	90	500
RRM 100	stainless steel	800	310	935	494	1020	865	43 kg	12 kg	90	500
RRM 200	carbon steel	1080	435	935	494	1020	1190	43 kg	17 kg	90	500
RRM 200	stainless steel	1080	450	935	494	1020	1190	43 kg	17 kg	90	500
RRM SA 1100	carbon steel	1080	435	1250	494	1020	1190	75 kg	22 kg	90	500
RRM SA 1100	stainless steel	1080	450	1250	494	1020	1190	75 kg	22 kg	90	500
RRM SA 1200	carbon steel	1200	450	1250	494	1020	1315	98 kg	34 kg	90	600
RRM SA 1200	stainless steel	1200	450	1250	494	1020	1315	98 kg	34 kg	90	600
RRM SA 1350	carbon steel	1350	550	1250	594	1115	1500	154 kg	53 kg	90	625
RRM SA 1350	stainless steel	1350	550	1250	594	1115	1500	154 kg	53 kg	90	625

Model	Gross	Charge	Drum Hoop Speed Rev per min.	Power kW	Volt.	Speed Rev per min.	Freq Hz	Enclosure ip
	Volume	Limit (max.)						
RRM ELTE 650	50 L	30 kg	32	0.25	415	300	50	65
RRM 100	100 L	60 kg	28	0.55	415	250	50	54
RRM 200	200 L	120 kg	21	0.55	415	250	50	54
RRM SA 1100	200 L	150 kg	21	0.55	415	250	50	54
RRM SA 1200	300 L	180 kg	19	0.55	415	250	50	54
RRM SA 1350	400 L	300 kg	12	1.5	415	180	50	54

* special voltage upon request

RRM

DRUM HOOP MIXERS

Three-blade Mixing Insert



Operation

The mixing insert is put on the bottom of the drum and fixed at the drum wall by parallel locking. It is easily exchangeable by means of the pull and turn fasteners.

Range of Application

For improving and accelerating the mixing intensity of powdery products.

Standard Drum	Diameter	Height	Beadings	Material	Weight
Gross Volume	mm	mm			kg
10 L	250	279	No	1.4541	3.0
20 L	315	305	No	1.4404	5.5
35 L	315	491	No	1.4404	6.8
50 L	400	451	No	1.4541	9.0
100 L	450	661	Yes	1.4541	11.3
100 L	450	680	No	1.4404	14.0
200 L	560	882	Yes	1.4541	20.0
200 L	560	901	No	1.4404	22.1
300 L	600	1079	Yes	1.4541	27.1
300 L	600	1083	No	1.4404	35.1
400 L	710	1052	Yes	1.4541	33.0
400 L	710	1060	No	1.4404	41.8

Standard Mixing Inserts (If desired, they can be adapted to containers provided on site)					
	Diameter(mm)	Height(mm)	Material Thickness(mm)	Material	Weight(kg)
10 L	250	279	1.5	1.4541	2.0
20 L	315	305	1.5	1.4541	2.5
35 L	315	491	1.5	1.4541	3.0
50 L	400	451	1.5	1.4541	4.0
100 L	450	661 or 680	1.5	1.4541	5.0
200 L	560	882 or 901	1.5	1.4541	7.0
300 L	600	1079 or 1083	1.5	1.4541	9.0
400 L	710	1052 or 1060	1.5	1.4541	12.0

RRM

DRUM HOOP MIXERS

Special Execution



Model: RRM 200
with electric drive pulley



Model: RRM 100
for 2 drums



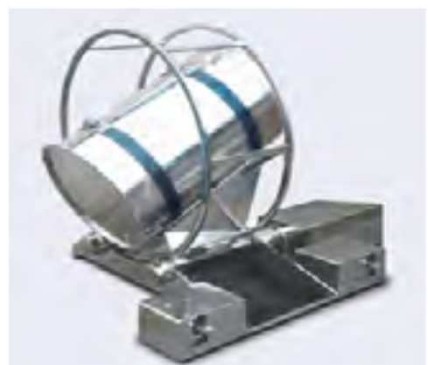
Model: RRM 200
S/S with encased drive - execution
according to GMP requirements



Model: RRM 100
for 2 drums



Model: RRM 100 ELTE
S/S with encased drive - execution
according to GMP requirements



Model: RRM 200
with carriage and tiller (also available in
carbon steel)

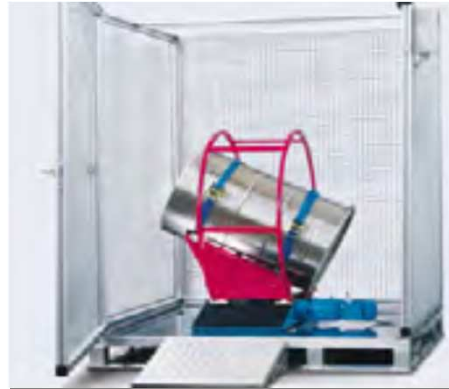
RRM

DRUM HOOP MIXERS

Protective Fence



RRM ELTE
WITH PROTECTIVE HOOD



RRM 100
WITH PROTECTIVE ALUMINIUM AND
MESH GUARD



RRM 200
WITH PROTECTIVE GLASS FENCE

CALMORE MACHINERY CO LTD

UNIT 4, 28 BLACK MOOR ROAD, EBBLAKE INDUSTRIAL ESTATE,
VERWOOD, BH31 6BB, UK

TEL: +44 (0)1202 827701 FAX: +44 (0)1202 813053

Email: info@calmorehinges.co.uk

www.calmorehinges.co.uk